

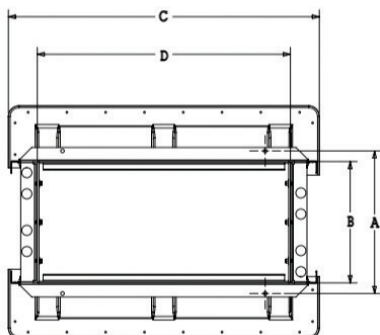
## DSE Dispenser Sump

OPW brings you a dispenser sump that delivers cost-effective peace of mind for retail-fueling operators. The innovative DSE combines superior design, premium materials and world-class manufacturing expertise without breaking the bank, and its fast, reliable construction means it's ready to slot into your station right away.

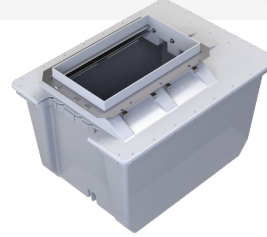
### Stacked with Features

DSE Dispenser Sumps fit into your existing dispensing network with ease. The smooth walls of the sump base create strong bonds with fiberglass and flexible pipe and fittings. The DSE's universal base is sized to nest perfectly inside itself, while the feet and specialized grooves help it to unstack with ease.

- ◆ Provides dependable quality each and every time with consistent wall thickness, material blend, sump shape and detail
- ◆ Shortest lead-time of any fiberglass sump in the industry; best value for the price on the market
- ◆ Maximizes distributor warehouse, construction trailer and jobsite space; lowers shipping costs
- ◆ Enhanced leak-resistant sealing surface for all types of fittings
- ◆ Reduces distributor inventory and improves ease of ordering; all sump models are conduitless with wide access
- ◆ Legendary OPW quality, service, support and value



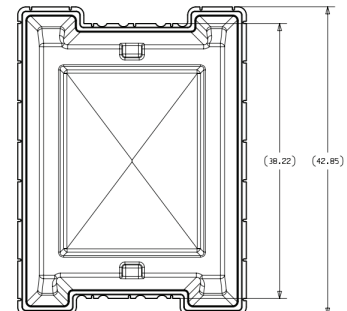
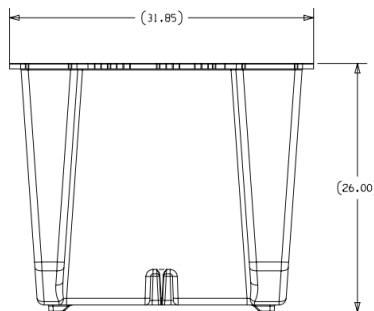
Sump: Fiberglass



### One Base – Five Top Adaptors

Part Number	Description	Stabilizer Bar Kits*
DSE-BASE	Description: DSE Universal Base. Combines with any DSE top	
DSE-1836 DSE-TOP-1836	DSE Base + Gilbarco Encore Top Gilbarco Encore Top	SBK-1800
DSE-1543 DSE-TOP-1543	DSE Base + Wayne Ovation Top Wayne Ovation Top	SBK-1500
DSE-1741 DSE-TOP-1741	DSE Base + Wayne Helix Wide (5000) Top Wayne Helix Wide (5000) Top	SBK-1700
DSE-1524 DSE-TOP-1524	DSE Base + Gasboy Atlas X Top Gasboy Atlas X Top	SBK-1500
DSE-1928 DSE-TOP-1928	DSE Base + Wayne Select or Helix Narrow (2000/4000) Top Wayne Select or Helix Narrow (2000/4000) Top	SBK-1500

\*Stabilizer Bar Kits purchased separately



### Top Adaptor Dimensions

Sump Model Number	Dimensions							
	A		B		C		D	
	in.	cm	in.	cm	in.	cm	in.	cm
DSE-TOP-1836	20.22	51.36	17.20	43.69	44.11	112.04	35.90	91.19
DSE-TOP-1543	17.18	43.64	14.60	37.08	45.90	116.59	38.90	98.81
DSE-TOP-1741	18.50	46.99	16.70	42.42	44.20	112.27	38.10	96.77
DSE-TOP-1928	18.70	47.50	14.60	37.08	44.20	112.27	25.90	65.79
DSE-TOP-1524	16.70	42.42	14.60	37.08	44.20	112.27	24.00	60.96